

# Project ECHO for Education Partnership with the UNM College of Education

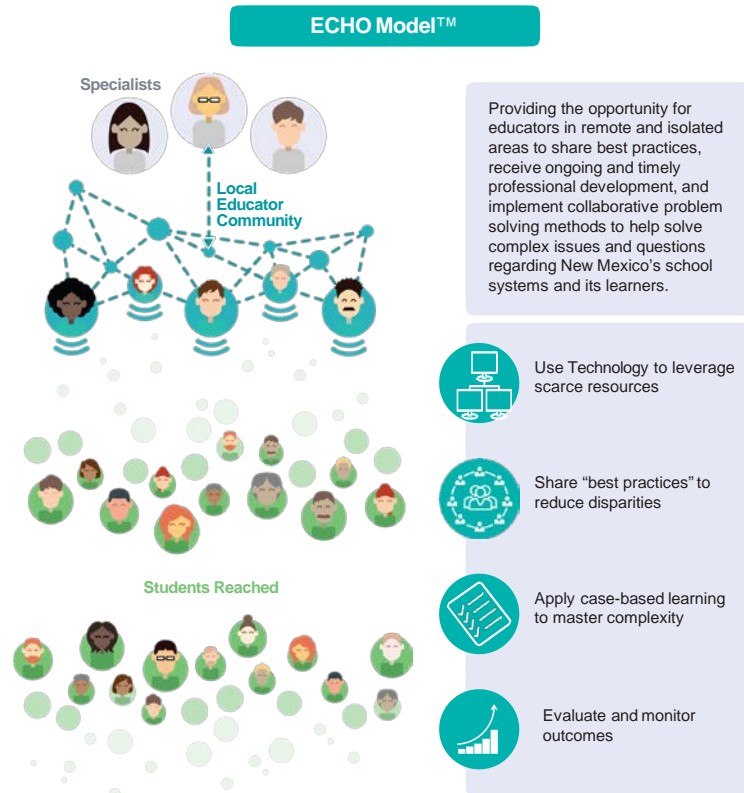
***ECHO* for NM Principal Support,  
Empowerment, and Leadership  
(ECHO NMPSEL)**



# Project ECHO for Education

Providing the opportunity for educators in remote and isolated areas to:

- Share best practices,
- Receive ongoing and timely professional development,
- Implement collaborative problem-solving methods to help solve complex issues and questions regarding New Mexico's school systems and its learners.



Use Technology to leverage scarce resources

Share "best practices" to reduce disparities

Apply case-based learning to master complexity

Evaluate and monitor outcomes

Through technology-enabled collaborative learning, ECHO for Education Programs builds capacity and creates access to high-quality professional learning throughout New Mexico.

### Educators

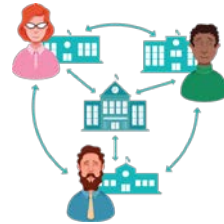
- Acquire new expertise & resources
- Access to mentoring & subject matter experts
- Building a community of practice

**For More Information about New Mexico ECHO for Education contact:**  
[edleadECHO@salud.unm.edu](mailto:edleadECHO@salud.unm.edu)

## New Mexico ECHO® for Education

### Moving knowledge, not students and educators

Through technology-enabled collaborative learning, EWS ECHO builds capacity and creates access to high-quality professional learning throughout New Mexico.



### Hub and spoke knowledge-sharing networks create a learning loop:

- Educators learn from experts.
- Educators learn from each other.
- Experts learn from educators as best practices emerge.

### Doing More for Students and Educators Across New Mexico



**Educators**

- Acquire new expertise & resources
- Access to mentoring & subject matter experts
- Building a community of practice



**Community**

- Build & retain good educators
- Skilled & engaged workforce
- Create more effective programs



**Students**

- More opportunities for learning
- Guidance and access to resources
- Tools to overcome barriers



**State Systems**

- Increase graduation rates
- Reduce remediation rates
- Develop our economy through a knowledgeable, prepared workforce

### Transforming Education in New Mexico



#### Creates Virtual Learning Communities

Educators in the most remote and isolated schools can regularly receive and share effective practices and present their most complex challenges where all teach and all learn.

For More Information about New Mexico ECHO for Education contact: [edleadECHO@salud.unm.edu](mailto:edleadECHO@salud.unm.edu)

### Community

- Build & retain good educators
- Skilled & engaged workforce
- Create more effective programs

### Students

- More opportunities for learning
- Guidance and access to resources
- Tools to overcome barriers

### State Systems

- Increase graduation rates
- Reduce remediation rates
- Develop our economy through a knowledgeable, prepared workforce

# ECHO for NM Principal Support, Empowerment, and Leadership:

## Theory of Action

- Local Leaders KNOW the Issues That Need to be Addressed
- Not every issue at the school or district level is related to finances or policy;
- Process Leads to Outcomes,
- There are pockets of excellence within NM as well as pockets of excellence outside of NM
- Leadership has significant effects on student learning
- There is much to be gained by looking at education, students, communities, at the like from an asset perspective and a orientation of what are we doing well than a deficit mindset and looking for what is wrong.
- Administrative Talk (oral language) is the Medium of Administrative Practice

# Our Goals and Vision

- School and District leaders will be provided regular, easily accessible, timely, profession learning opportunities and a community of practice that provides collaborative problem solving for their most significant, complex challenges and disorienting dilemmas.
- NMPSEL is a way to build community across the distances of our rural state and to work together collaboratively and organically.
- To bring back the joy of work and collegiality that evolves from an ECHO Community of Practice

## **Our Community of Practice Participants will:**

- Have Access to the most current best practices in school and district leadership
- Have Access to resources in innovation and success in leading during a pandemic
- Have Access to mentors and expertise from a variety of New Mexico leadership organizations and the UNM Education Leadership department
- Better understand the pathology of the Pandemic
- How to move forward and operate in the format and environment
- Framework of supporting the SEL of Teachers
- Ideas and solutions to Bring back our students

# Monthly Session Topics

- February – Equity Councils and Equity Audits
- March – Lessons Learned from COVID-19/Remote Learning that will continue into our “New Normal”
- April – Administrator/teacher Self-Care
- May – CTE Pathways

Summer Online Conference: Details following soon



# Our Digital Resource Library

## Includes:

- Presentations and session recordings
- Digital Resources provided by UNM Education Leadership department
- Notes, resources, and recommendations generated during collaborative problem solving segment of each session
- Research, and how the pandemic caused some kids to suffer, and some kids to thrive.

# ECHO for NM Principal Support, Empowerment, and Leadership Schedule

February 17<sup>th</sup> at 7:30am to 8:45am

Program Launch

Thereafter on 3<sup>rd</sup> Wednesday of each month through May

February 3<sup>rd</sup> 9am for Superintendents